



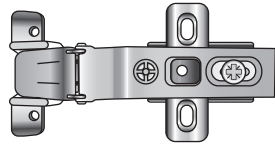
# Wardrobe

## Attaching 450mm Framed Frosted Glass Hinged Door

**110° Door Hinge x 4**  
Use when attaching door to cabinet.

x 8  
110° Hinge Screws

x 8  
12mm Plastic Lug



**24mm Handle Screws x 1**



**Handles x 1**



**Foam Buffer x 4**



**14mm Wood Screws x 16**

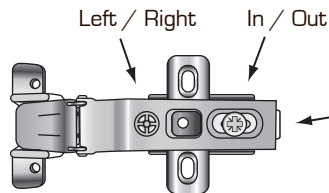


### STEP 1 ATTACHING HINGE PLATE TO DOOR

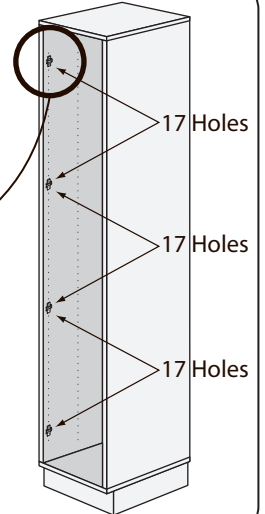
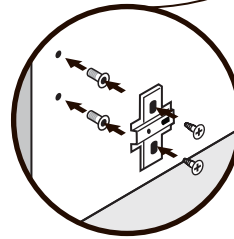
Using a hammer, tap in the small clear plastic lugs into the 2nd and 3rd pre drilled screw holes. Place the hinge plate into position, secure the small silver screws through the elongated holes and into the plastic lugs. Avoid over tightening screws. Allow 17 empty pre drilled holes and place 2nd hinge plate. Repeat the same procedure for the remaining hinge plates.

**Note:** The elongated holes on the hinge plate face the rear of the cabinet and the round holes face the front.

Adjusting Screws

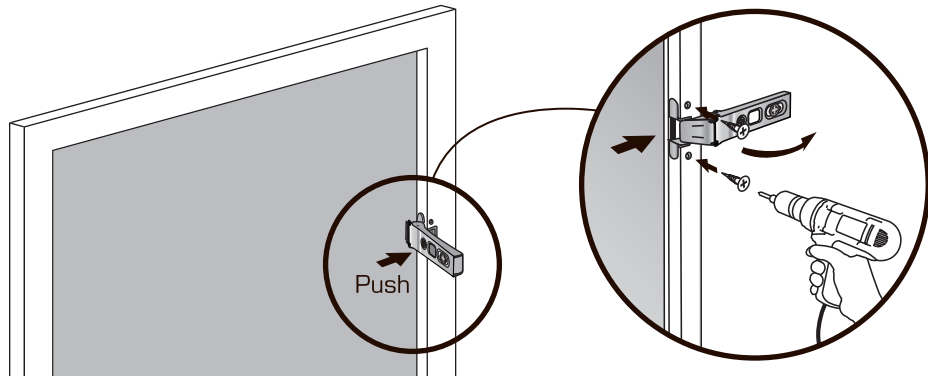


Push here to release the Hinge Plate from the Hinge.



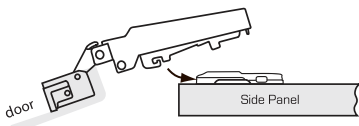
### STEP 2 ATTACHING HINGE TO DOOR

Push hinges into the door and fix into place with screws provided.

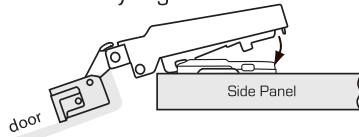


### STEP 3 ATTACHING & ADJUSTING DOORS

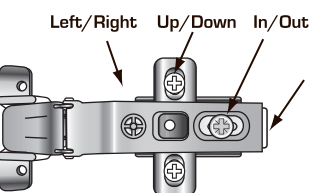
**1.** Clip the door onto the hinge plates.



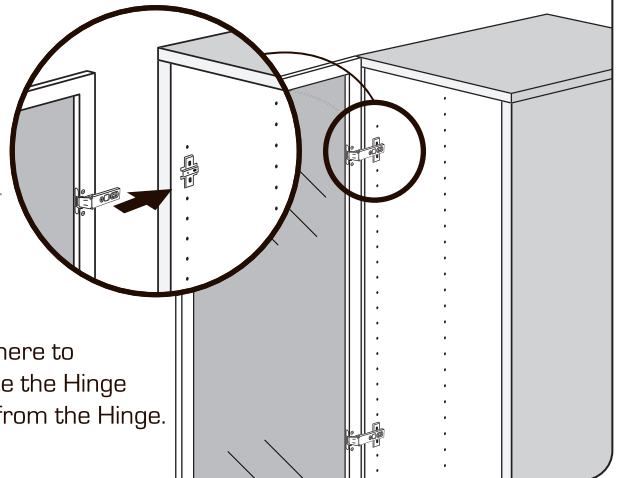
**2.** Now push down to clip hinge securely together.



**3.** To align doors adjust marked screws.



Push here to release the Hinge Plate from the Hinge.



**CAUTION !** Please ensure all cabinets are screwed into your timber stud wall using a minimum of 8 gauge, 65mm screws. If attaching to concrete, brick, steel or other sub surfaces seek advice from your hardware specialist. Please ensure you follow the installation and safety instructions located on your cabinet assembly instructions carefully.

For further enquiries visit [www.flatpax.com.au](http://www.flatpax.com.au) or call customer service on 1800 666 078 Between 7:00am - 6:30pm E.S.T Mon - Fri

Ver 1.7